

# Housing Authority of the City of Loveland

**The Meadows  
1056 Lynx Ave**

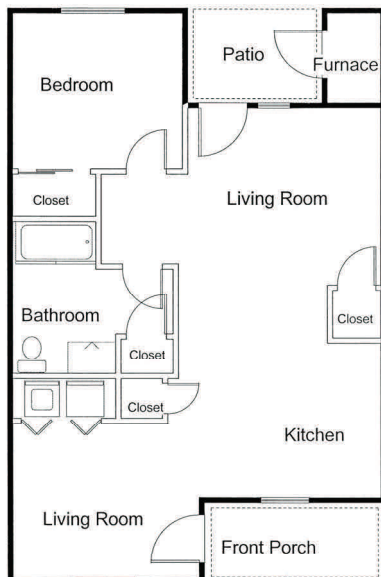
**Property Manager  
Melissa Hernandez  
mhern@lovelandhsg.org  
970-635-5937**



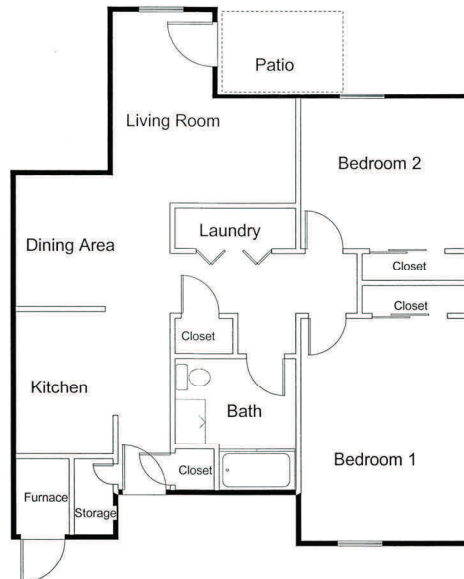
**Basic Rent/Market Rent**  
**1 Bedroom—\$533**  
**2 Bedroom—\$556-\$697**  
**3 Bedroom—\$570-\$787**



The Meadows apartments offers (10) one bedroom, (25) two bedroom, and (25) three bedroom units with several different floor plans including town homes, one-level flats and walk-up units. There are handicap accessible units available in all



Meadows  
One Bedroom Flat - 720 SqFt



Meadows  
Two Bedroom Flat  
891 SqFt

More floor plans on second page.....

Thank you for visiting [www.lovelandhsg.org](http://www.lovelandhsg.org)

w e l c o m e h o m e

# Housing Authority of the City of Loveland

**The Meadows  
1056 Lynx Ave.**

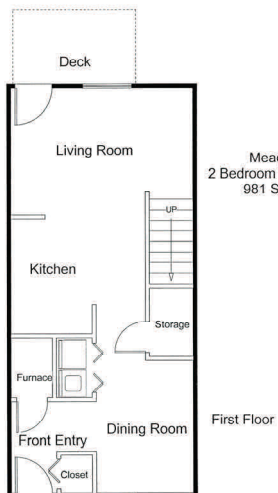
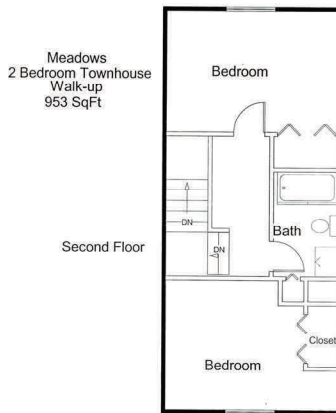
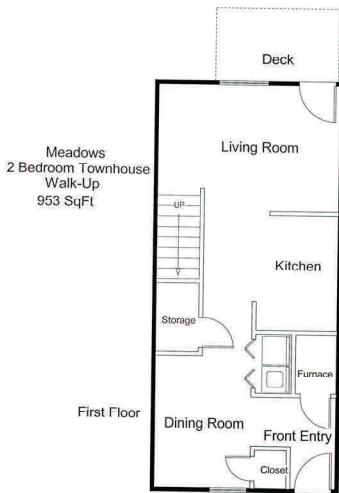
**Property Manager  
Melissa Hernandez  
mhern@lovelandhsg.org  
970-635-5937**



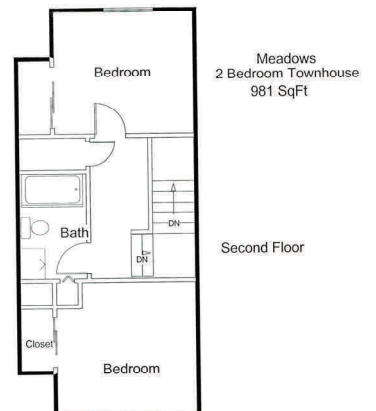
**Basic Rent/Market Rent**  
**1 Bedroom—\$533**  
**2 Bedroom—\$556-\$697**  
**3 Bedroom—\$570-\$787**



***The Meadows***  
*Picture Perfect Living*



Meadows  
2 Bedroom Townhouse  
981 SqFt



Meadows  
2 Bedroom Townhouse  
981 SqFt

# Housing Authority of the City of Loveland

**The Meadows  
1056 Lynx Ave.**

**Property Manager  
Melissa Hernandez  
mhern@lovelandhsg.org  
970-635-5937**



**Basic Rent/Market Rent**  
**1 Bedroom—\$533**  
**2 Bedroom—\$556-\$697**  
**3 Bedroom—\$570-\$787**



***The Meadows***  
*Picture Perfect Living*

