

*Housing Authority
of the City of Loveland*

**Maple Terrace
574 E 23rd Street**

**Property Manager
Carolyn Coffelt
ccoff@lovelandhsg.org
970-635-5919**

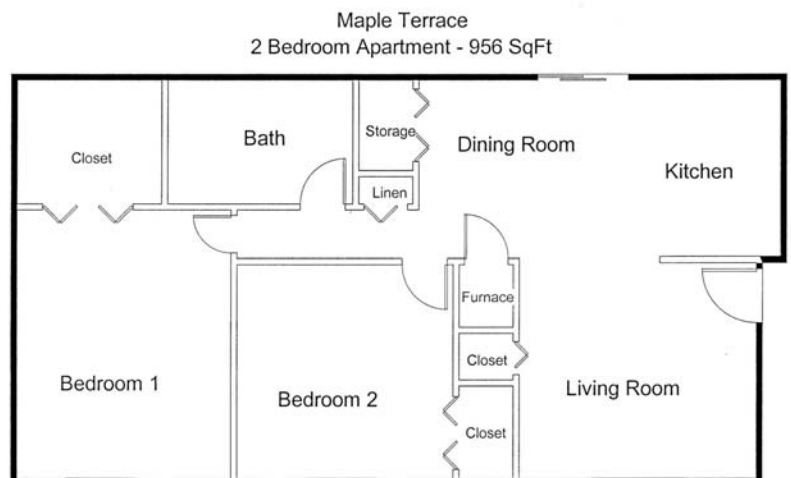
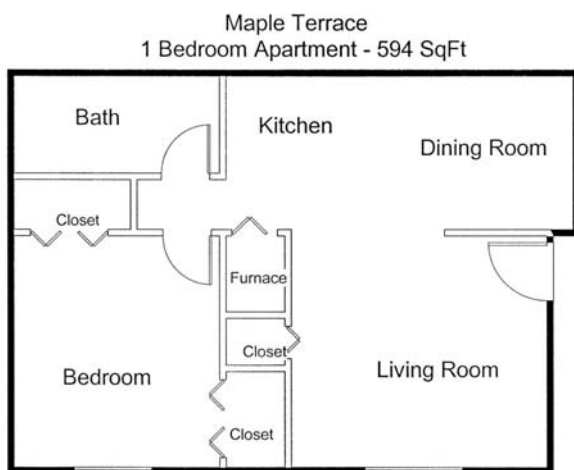
Basic Rent/Market Rent
1 Bedroom—\$370-\$408
2 Bedroom—\$441-\$486
3 Bedroom—\$505-\$557
4 Bedroom—\$555-\$613

Rents Subject to Change



**MAPLE TERRACE
APARTMENT HOMES**

“Community” is the life style found at Maple Terrace Apartments. This active and vivid community hosts 130 family units which offer a 3-tiered rent structure. At Maple Terrace, one will find both ceiling and floor rents. Individual rents are based on annual income and all utilities are included in the rent! Additionally, there are (52) Section 8 subsidies which allow residents to pay 30% of their monthly income for rent.



More Floor plans on second page.....

Thank you for visiting www.lovelandhsg.org

w e l c o m e h o m e

*Housing Authority
of the City of Loveland*

**Maple Terrace
574 E 23rd Street**

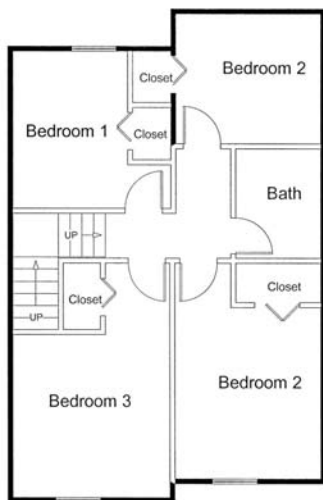
**Property Manager
Carolyn Coffelt
ccoff@lovelandhsg.org
970-635-5919**

Basic Rent/Market Rent
1 Bedroom—\$370-\$408
2 Bedroom—\$441-\$486
3 Bedroom—\$505-\$557
4 Bedroom—\$555-\$613

Rents Subject to Change

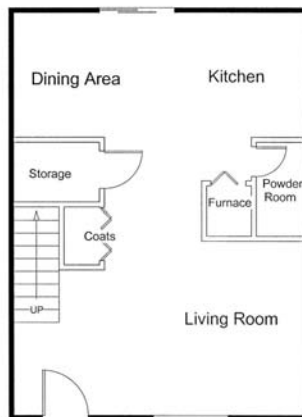


**MAPLE TERRACE
APARTMENT HOMES**



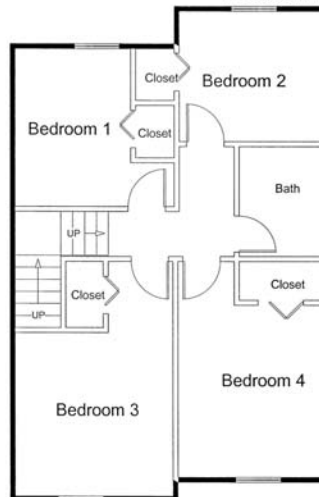
Second Floor

Maple Terrace
3 Bedroom Townhome - 1107 SqFt

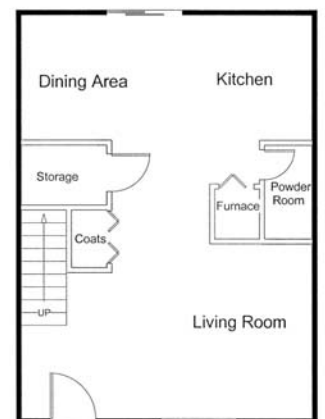


First Floor

Maple Terrace
4 Bedroom Townhome - 1140 SqFt



Second Floor



First Floor

Thank you for visiting www.lovelandhsg.org

w e l c o m e h o m e